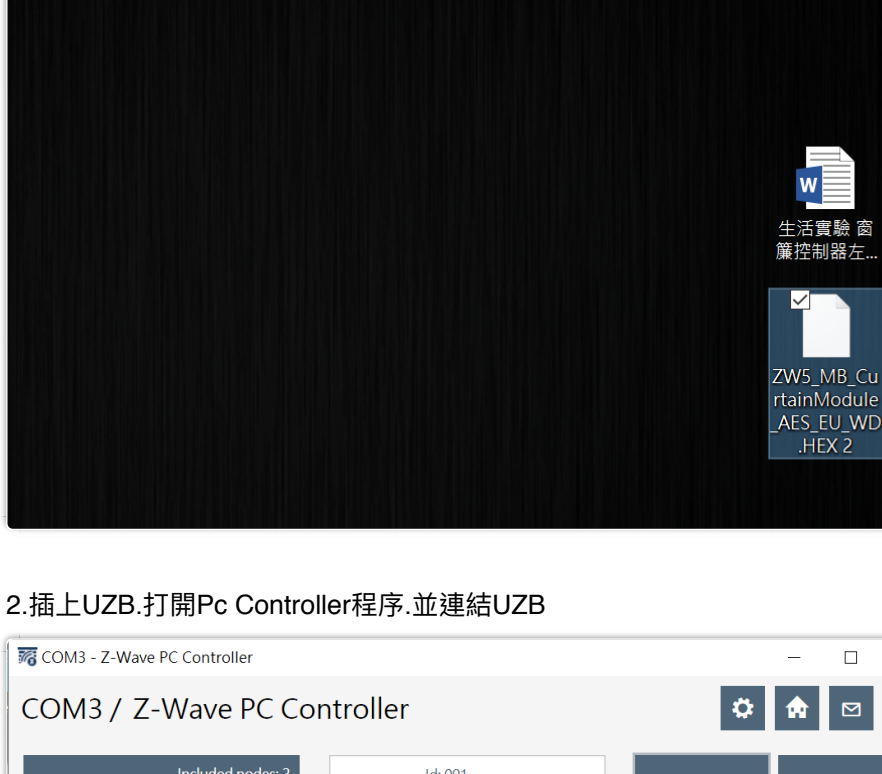


必備更新檔

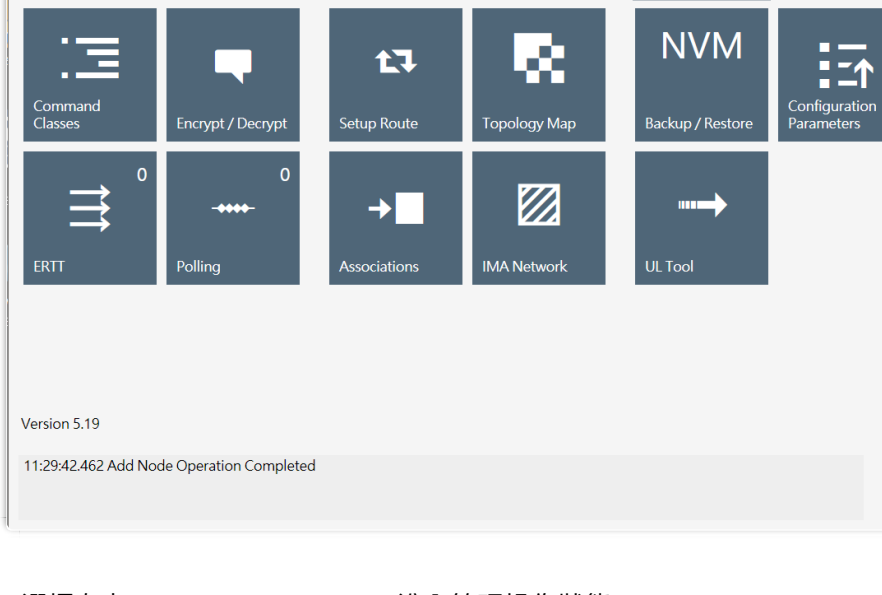
ZW5_MB_CurtainModule_AE...

須準備乾淨的:電腦.PC controller程序, U Z B 等

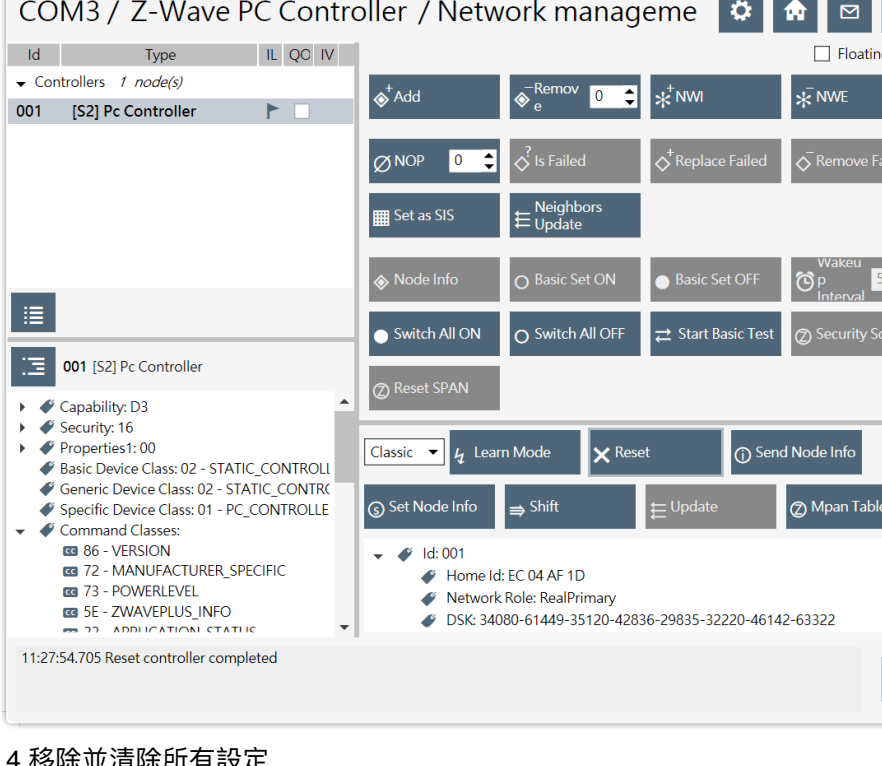
1.將更新程序至於windows桌面



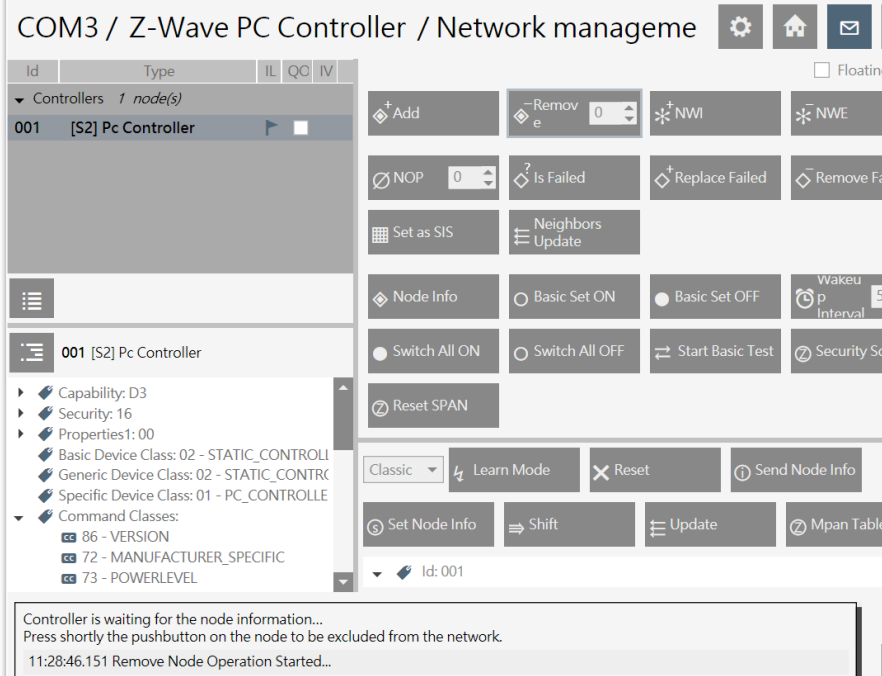
2.插上UZB:打開Pc Controller程序.並連結UZB



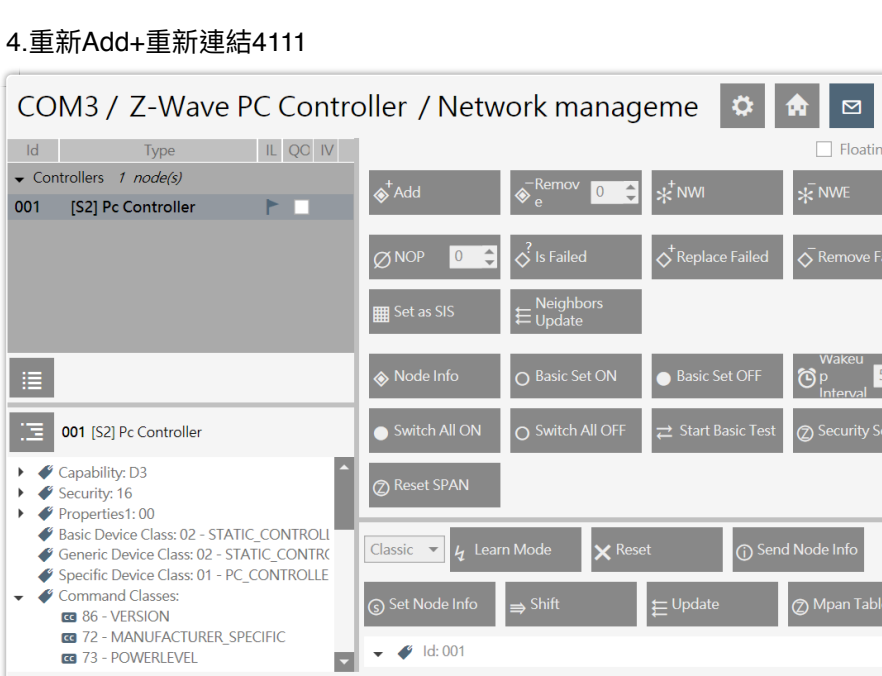
3選擇左上Network Management.進入管理操作狀態



4.移除並清除所有設定



4.重新Add+重新連結4111



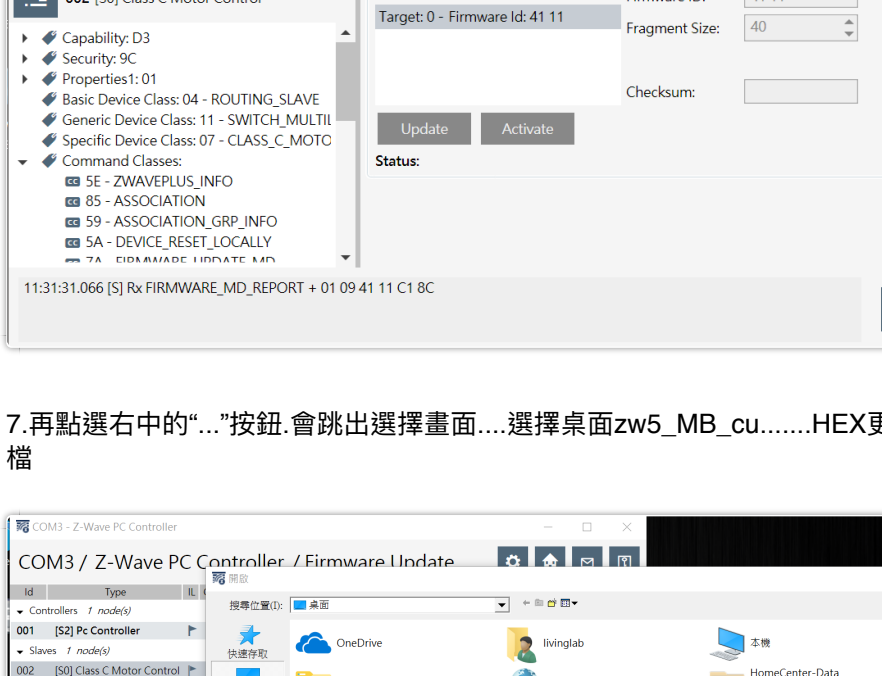
5.點選右上房子按鈕.再點選中間OTA按鍵



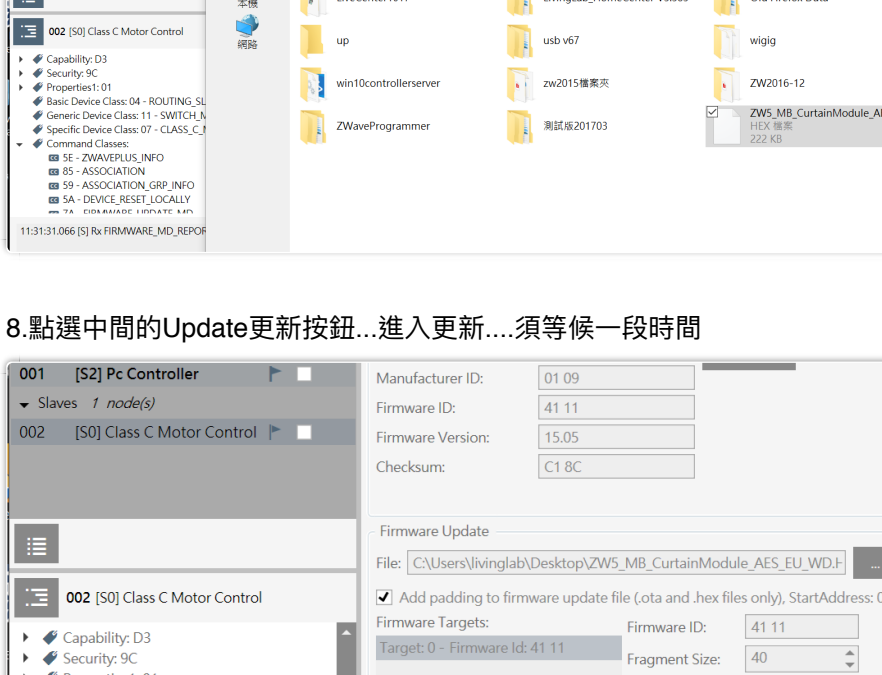
6.點選要更新的4111控制器.然後點選右上 Get按鈕....會出現工廠製造序號



7.再點選右中的“...”按鈕.會跳出選擇畫面....選擇桌面zw5_MB_cu.....HEX更新檔



8.點選中間的Update更新按鈕...進入更新....須等候一段時間



9.更新完成....最下方會出現 Successfully=FF文字



10.再依序更新更多其他4111控制器...

COM3 / Z-Wave PC Controller / Firmware Update

Id	Type	IL	QC	IV
▼ Controllers 1 node(s)				
001	[S2] Pc Controller			
▼ Slaves 3 node(s)				
002	[S0] Class C Motor Control			
004	[S0] Class C Motor Control			
005	[S0] Class C Motor Control			

005 [S0] Class C Motor Control

- Capability: D3
- Security: 9C
- Properties: 1: 01
- Basic Device Class: 04 - ROUTING_SLAVE
- Generic Device Class: 11 - SWITCH_MULTII
- Specific Device Class: 07 - CLASS_C_MOTC
- Command Classes:
 - 5E - ZWAVEPLUS_INFO
 - 85 - ASSOCIATION
 - 59 - ASSOCIATION_GRP_INFO
 - 5A - DEVICE_RESET_LOCALLY
 - 7A - DIMMABLE_UPDATE_MFG

Current Firmware

Command Class Version: 2

Manufacturer ID: 01 09

Firmware ID: 41 11

Firmware Version: 15.05

Checksum: C1 8C

Firmware Update

File: C:\Users\livinglab\Desktop\ZW5_MB_CurtainModule_AES_EU_WD.F...

Add padding to firmware update file (.ota and .hex files only), StartAddress: 0

Firmware Targets: Firmware ID:

Fragment Size:

Checksum:

Status: successfully=FF

12:30:53.801 successfully=FF

最後:按窗簾控制器行程設定方式設定行程..0/99為兩端頂點
中間數值為定點